

AHFoZ Conference 2014
03 September 2014
ICD 10 Codes - Shane Perumal



enabling excellence



AFROCENTRIC
HEALTH *solutions*



AHFoZ Conference 2014

- Introduction
- Background to ICD10 Codes
- Implementation
- What Can ICD10 Codes do for you?
- Questions?



AFROCENTRIC
HEALTH *solutions*

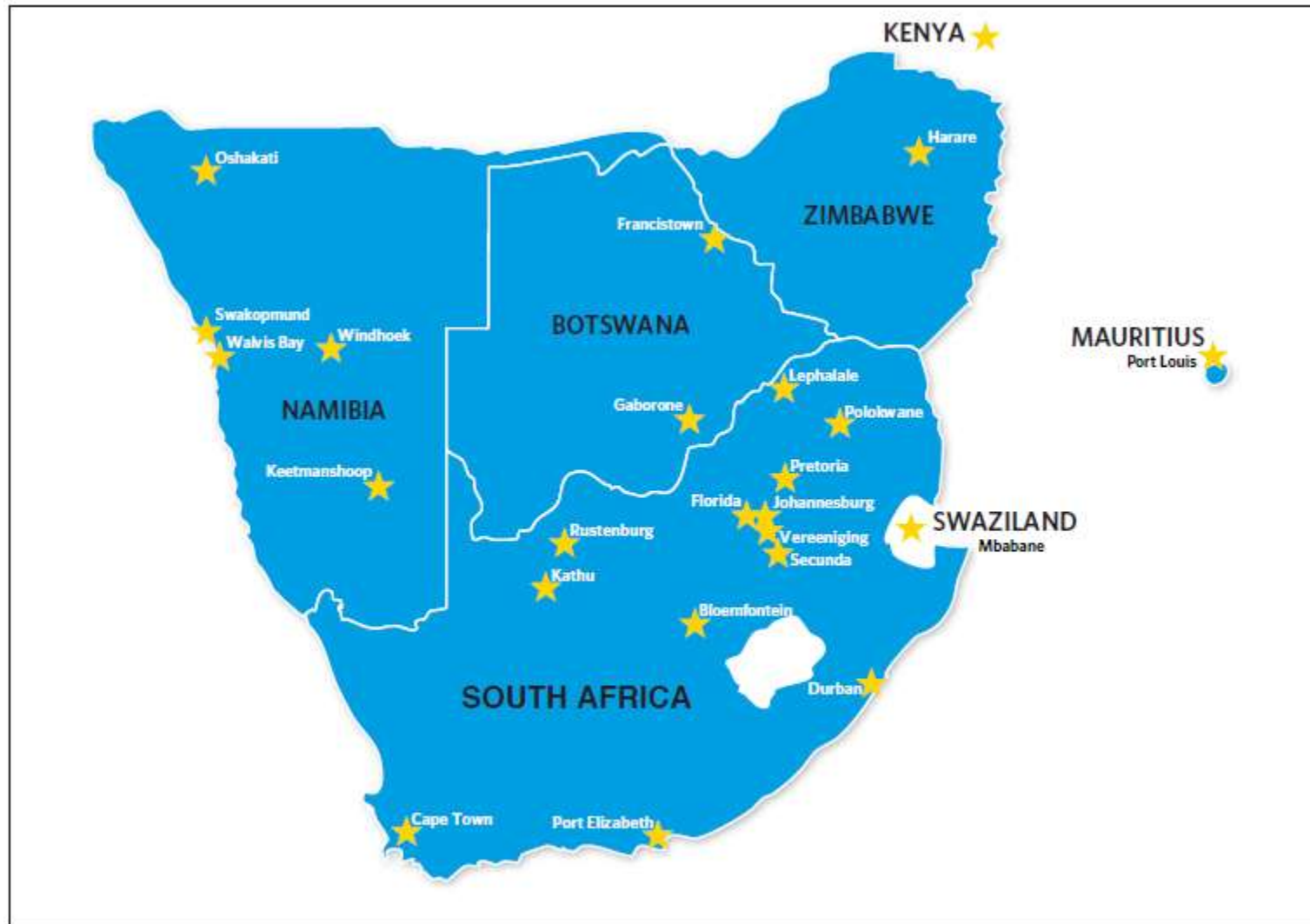
enabling excellence



AfroCentric
HEALTH *solutions*

A Member of AfroCentric Group







AFROCENTRIC
HEALTH *Solutions*

enabling excellence

41yr Proven 41-year track record of leadership in Southern Africa.

 Largest managed care provider and healthcare administrator in Southern Africa

38% 38% South Africa market share incl GEMS contract

 More than 4,050,000 lives under management.

 Client base includes 32 leading medical schemes in public and private sectors.

 22 offices across Africa (Including Mauritius)

 Highly capable and experienced management team

 3,900 employees



AFROCENTRIC
HEALTH *solutions*

enabling excellence





Annually

- **7.9 million** inbound calls
- **1.7 million** email correspondence and other written correspondence
- **48 million** claims processed
- **1,2 million** approved hospital pre-authorisation requests, and
- **R 16 billion** paid in claims

Daily

- **R 43 million** paid in total benefits
- **128,100** claims processed
- **13,900** GP consultations processed
- **39,900** prescriptions processed
- **24,600** customer interactions
- **98** trauma incidents, and
- **46** births

It is a complex business requiring a high level of skill



AFROCENTRIC
HEALTH *Solutions*

enabling excellence



Background

ICD-10

Background on ICD 10 codes

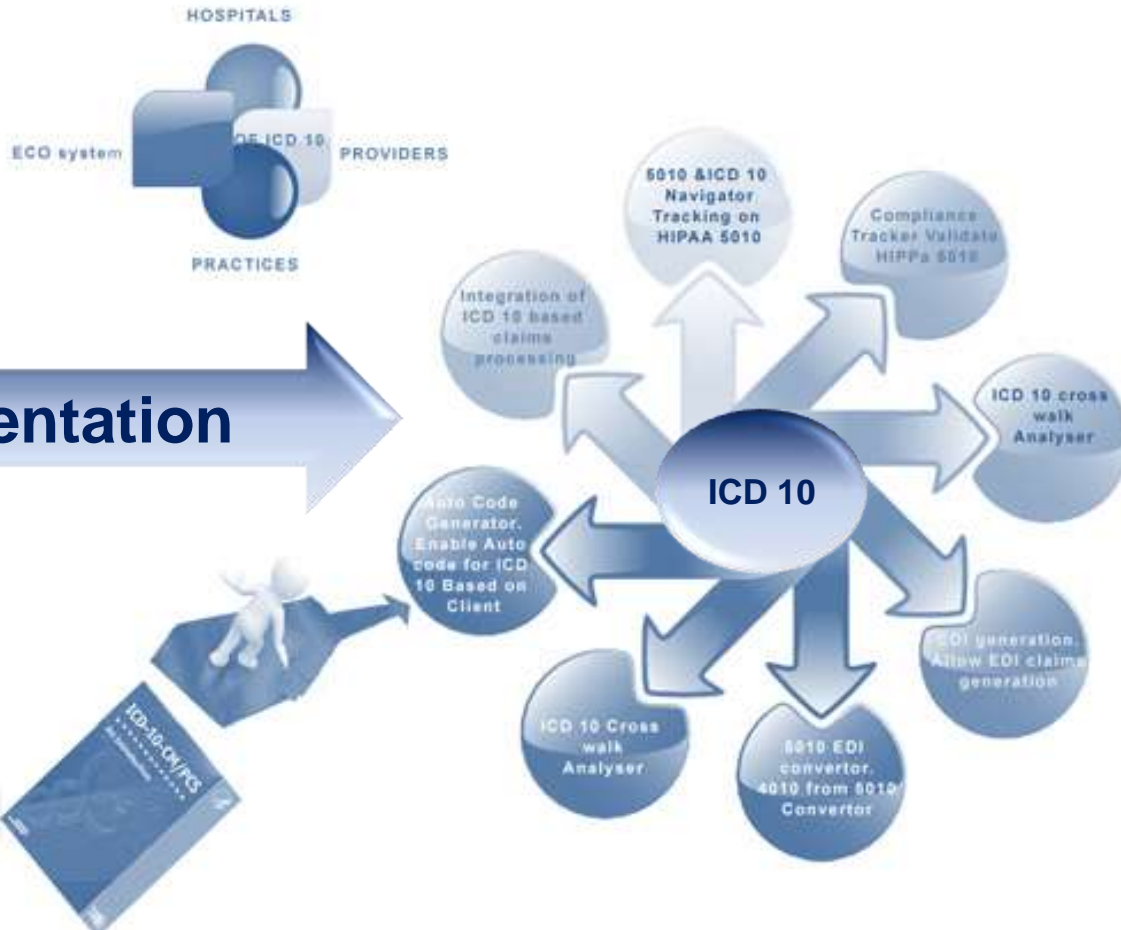
ICD 10- Diagnosis codes are owned and maintained by the World Health Organisation

- ICD stands for International Statistical Classification of Diseases and Related Health Problems
- 10: Tenth version – Updated every 10-15 years by the World Health Organisation, next update to be done in 2015.
- ICD 10 is a legislative requirement within South Africa
- The coding standard was adopted as one of the National Information Systems of South-Africa
- This forms part of the Health Information Strategy for the National Department of Health



Background on ICD 10 codes....(cont.)

- ICD 10 codes in South Africa are published on the South African Master Industry Table (MIT) and distributed by the Department of Health.
- The MIT is specific to SA with ICD-10 codes only applicable to SA for example **U50.10** “*Drug resistant Tuberculosis, primary resistance to Isoniazid (INH) only*”
- The MIT is a year behind WHO updates thus codes could be present on WHO list not on MIT. Only MIT codes will be accepted within South Africa.
- From 01 July 2014 all ICD 10 codes on the claim line (non hospital) or claim header (hospital) that are invalid will be rejected



Implementation Process

- **Phase 1 - began 2005 when diagnosing providers were required to submit their claims with ICD codes**
 - Basic validation was done and submitting HCPs were advised with an information remark code if:
 - ❖ ICD10 code was not submitted
 - ❖ ICD10 code submitted was invalid
- **Phase 2 - late 2005 to early 2006, all HCPs had to submit ICD-10 codes**
 - Lots of communication to HCPs and member education
 - ICD10 codes were checked on claims and claims were rejected for invalid or no ICD10 codes present
- **Phase 3 - of the ICD 10 implementation went live on the 01 July 2014**
 - This included further checking on the submitted ICD10 code:
 - **This includes (details to follow);**
 - ❖ Is it in the right position on the claim (primary and secondary)
 - ❖ Is it the most detailed descriptor

Phase 3 of the ICD 10 implementation

Is the ICD 10 code in the right position on the claim?

- **Two types of codes;**
 - ❖ Primary codes must be in the first position
 - ❖ Secondary codes must follow the primary code
- **Types of secondary codes**
 - ❖ An asterisk code has to be billed with a dagger code
 - ❖ External cause codes (codes starting with V, W, X, Y)
 - ❖ Certain maternity codes
 - ❖ Sequelae codes – has the word sequelae in the descriptor of the code
 - ❖ Certain codes describing bacteria or viruses (eg. codes B95-B97)
 - ❖ Morphology codes (eg. M8000/0)

Phase 3 of the ICD 10 implementation.....cont

Is it the most detailed descriptor?

- Referred to as “highest specificity”
- Some codes consists of 3 characters
 - ❖ E.g. code **I10 Essential (primary) Hypertension**
- Some codes consist of up to 5 characters
 - ❖ E.g. Code **M79.66 Pain in limb lower leg**
 - ❖ Going forward we will now reject code M79 until the provider codes correctly to the 5th digit – this claim will not be paid.

Phase 4.1 of the ICD 10 implementation (currently in progress)

Is the ICD 10 code for the correct age and gender?

- Certain ICD 10 codes are only applicable to certain genders
 - ❖ E.g. **N97.0 Female infertility will be rejected if billed on a claim where the dependent is male.**
- Certain ICD 10 codes are only applicable to certain ages
 - ❖ E.g. **Z00.1 “Routine child health examination”**

S	8	6
---	---	---

Category

S = Injuries, poisoning and certain other consequences of external causes related to single body regions

S86 = Injury of muscle, fascia and tendon at lower leg

•

0	1	1
---	---	---

Etiology, Anatomic Site,
Severity, Other Vital Details

S86.0 = Injury of Achilles tendon

S86.01 = Strain of Achilles tendon

S86.011 = Strain of right Achilles tendon

D

Extension

Primarily used to document episode of care for injuries and other conditions with external causes

A = Initial Encounter

D = Subsequent Encounter

S = Sequela



AFROCENTRIC
HEALTH *Solutions*

enabling excellence

ICD10 Codes to make you think





ICD10 Codes that makes one think

- **R46.1 Bizarre personal appearance**
- **X52 Prolonged stay in weightless environment**
- **Z63.1 Problems in relationship with in-laws**
- **Z62.1 Parental overprotection**





AFROCENTRIC
HEALTH *Solutions*

enabling excellence

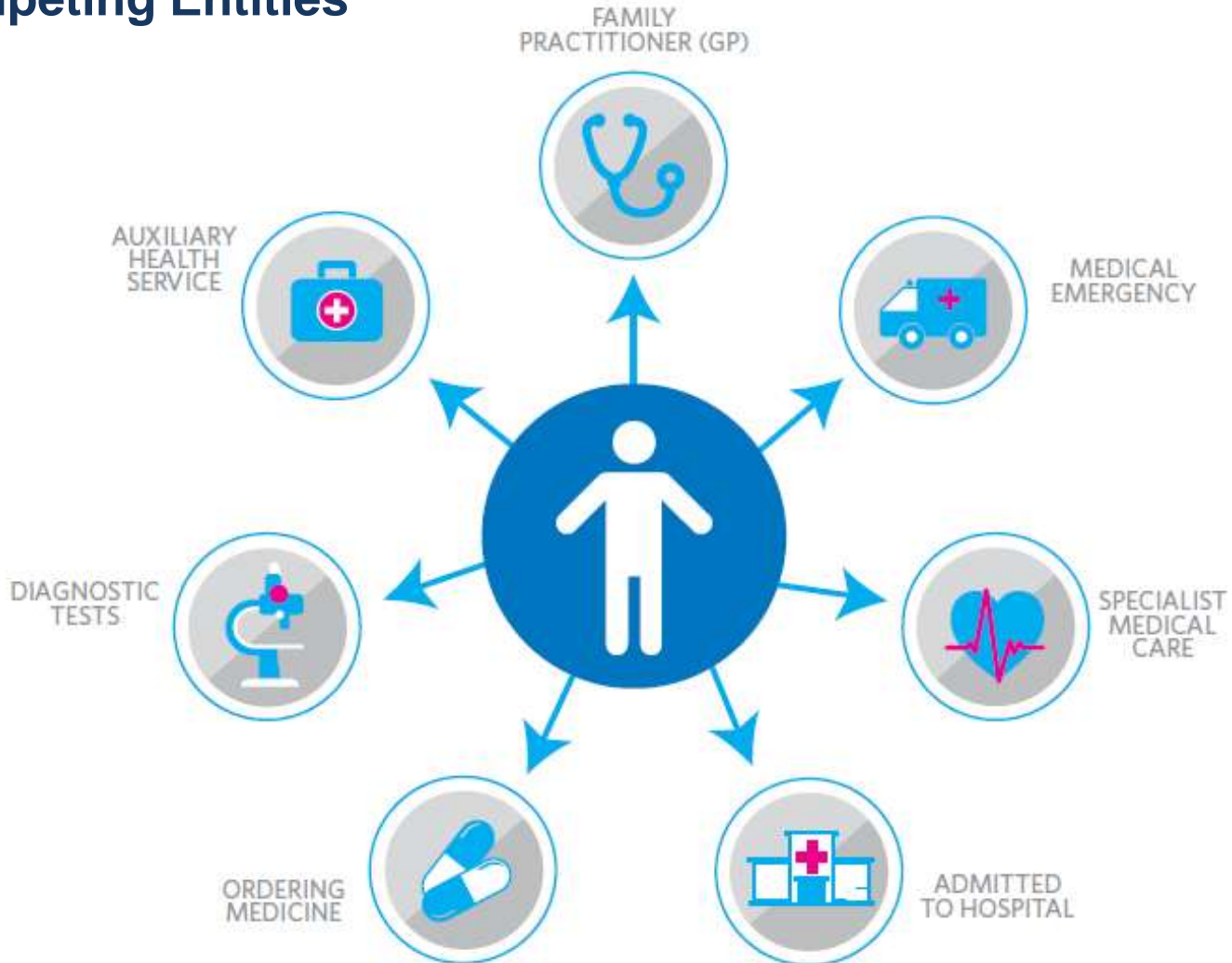
**What can ICD 10 Codes do for
YOU?**

ICD - 10



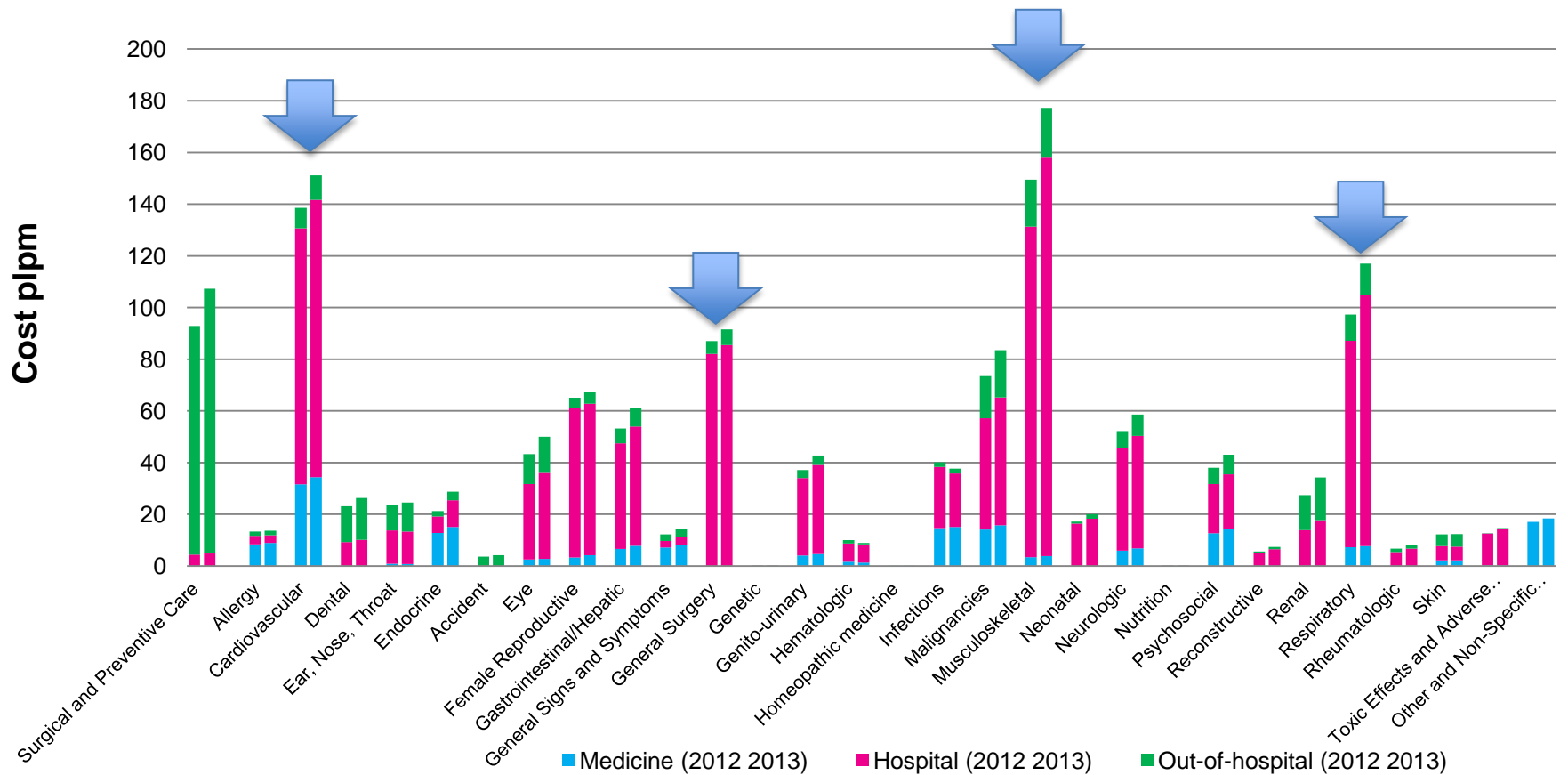


Competing Entities



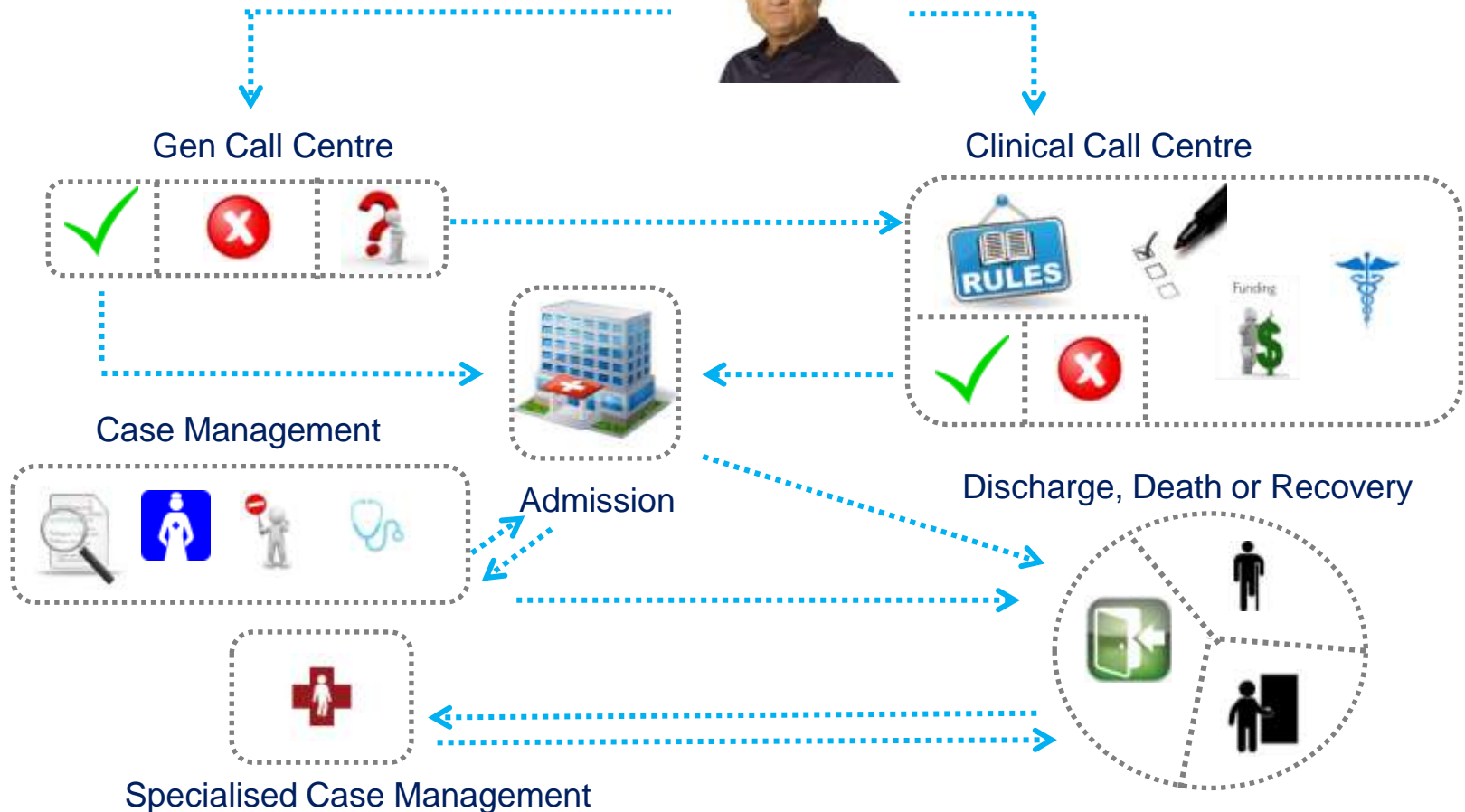


Scheme Spend by Clinical Category



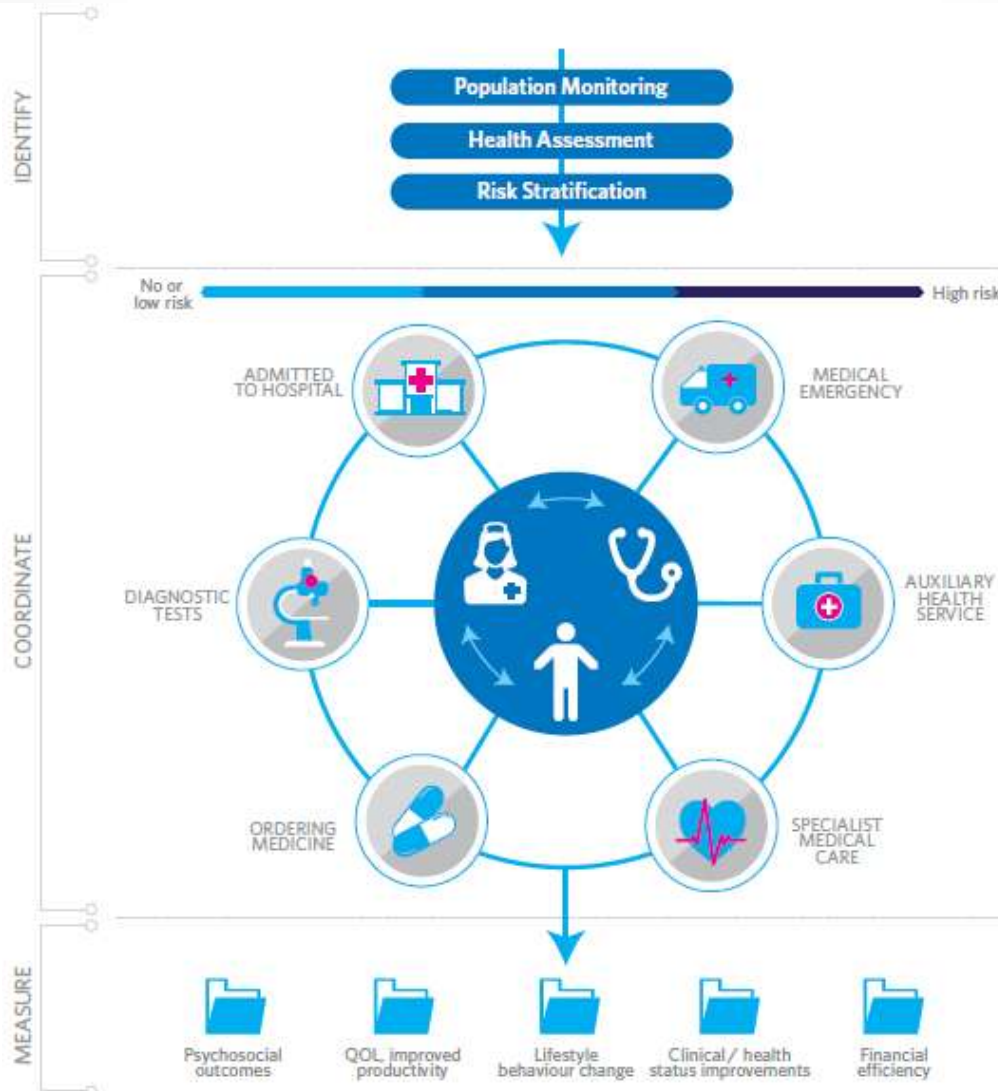


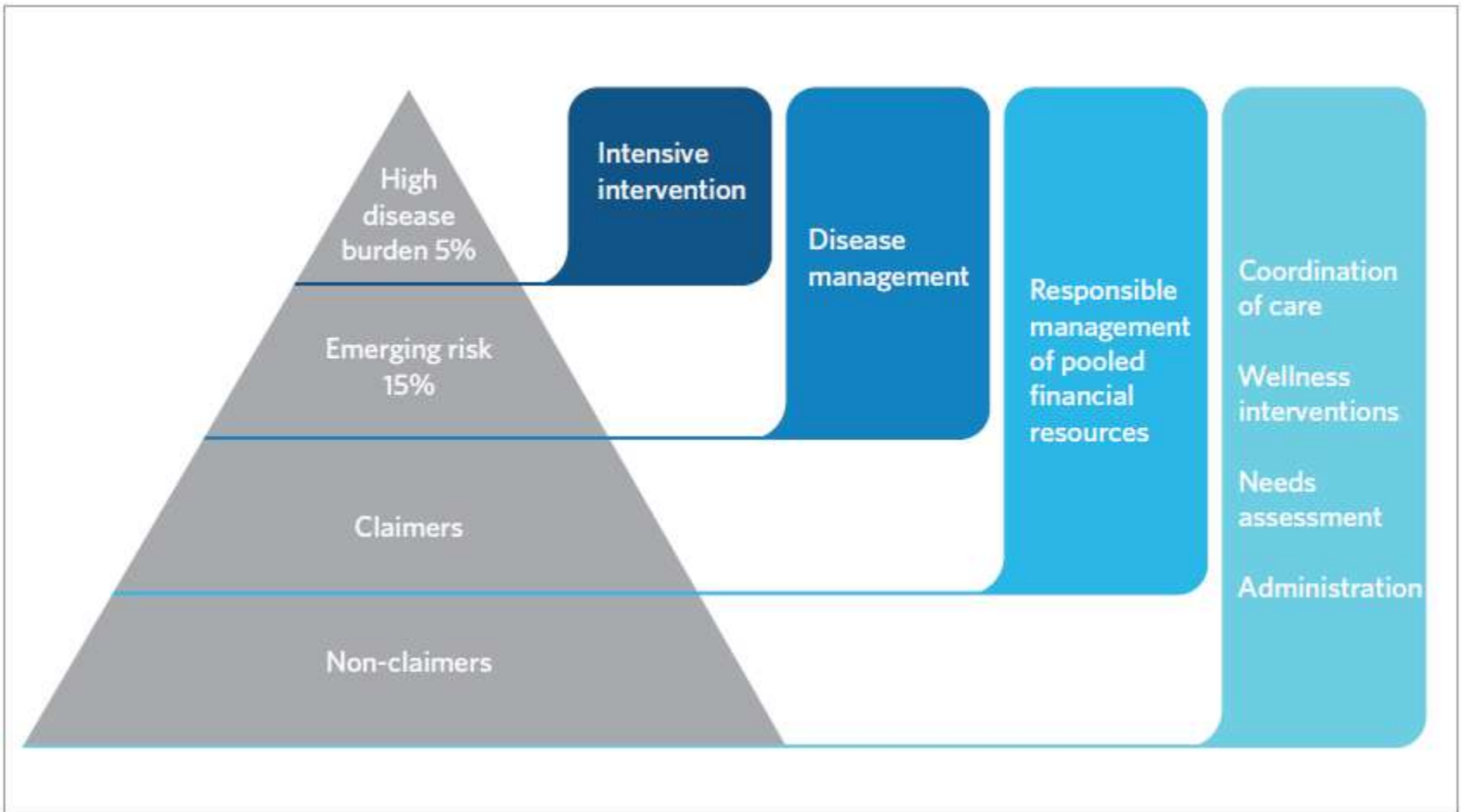
Hospital Benefit Management



Top 10 Admission Categories by costs -

Admission Category		Admissions / 1 000 Lives			Average Cost per Admission			Hospital Cost per Life per Month		
		2013	2014	% Change	2013	2014	% Change	2013	2014	% Change
1	Cardiac Catheterization/Angiogram	2.99	7.16	139%	31,274	48,090	54%	7.80	28.69	268%
2	Other bacterial diseases	0.41	0.84	106%	6,854	289,737	4127%	0.23	20.34	8627%
3	Knee Arthroplasty	2.18	3.23	48%	83,542	106,684	28%	15.15	28.71	89%
4	Spinal fusion w/wo instrumentation	0.95	1.83	92%	70,316	111,718	59%	5.58	16.99	205%
5	Thoracotomy	0.14	0.70	416%	165,390	156,839	-5%	1.87	9.17	389%
6	Pacemaker/Defibrillator Procedures	0.68	0.84	24%	47,768	134,590	182%	2.71	9.45	249%
7	Hip Arthroplasty	1.22	1.54	26%	93,680	117,894	26%	9.56	15.17	59%
8	Colostomy closure	0.27	0.84	210%	46,584	87,501	88%	1.06	6.14	482%
9	Hysterectomy	1.90	3.23	70%	23,649	29,560	25%	3.75	7.95	112%
10	Endoscopy - Urology	5.58	6.88	23%	11,946	16,609	39%	5.55	9.52	72%
Total of Top 10 Admission Categories		16.32	27.10	66%	39,157	67,380	72%	53.26	152.14	186%
Top 10 as a % of All Categories								12.4%	27.3%	







AFROCENTRIC
HEALTH *Solutions*

enabling excellence



**KEEP
CALM
AND
KEEP
CODING**



AFROCENTRIC
HEALTH *Solutions*

enabling excellence



Questions



AFROCENTRIC
HEALTH *Solutions*

enabling excellence

*Thank
You*